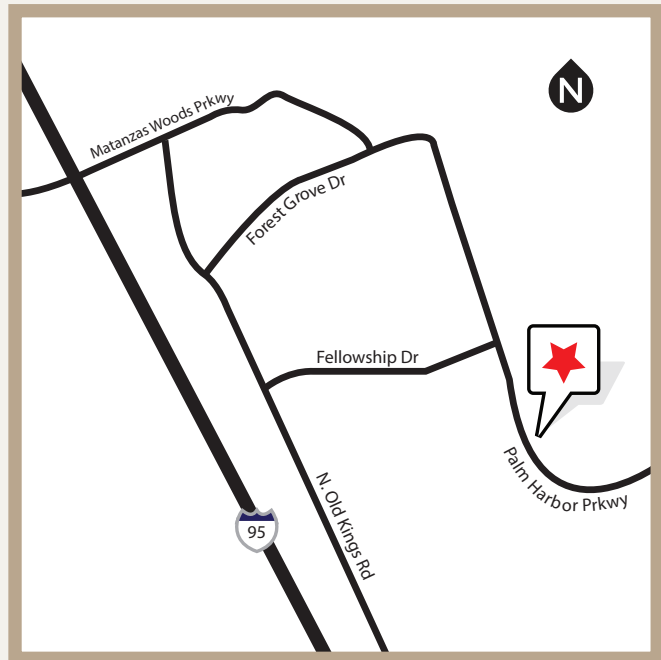




*Welcome Home*

**TO SABAL PALMS**



**SABAL PALMS**  
ASSISTED LIVING & MEMORY CARE

A Protea Senior Living Community

**(368) 302-2383**

[www.SabalPalmsSeniorLiving.com](http://www.SabalPalmsSeniorLiving.com)

2125 Palm Harbor Parkway | Palm Coast, FL 32137



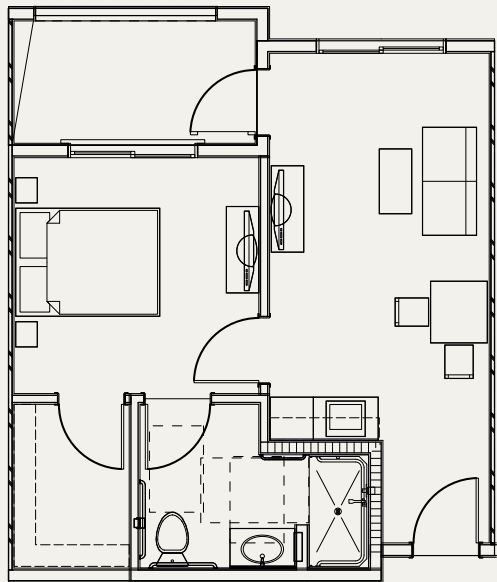
**SABAL PALMS**  
ASSISTED LIVING & MEMORY CARE

A Protea Senior Living Community

**COMMUNITY FLOOR PLANS**



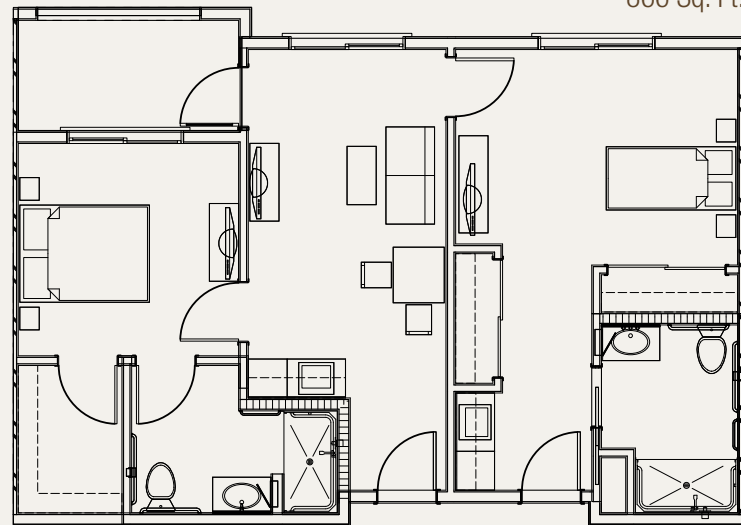
[www.SabalPalmsSeniorLiving.com](http://www.SabalPalmsSeniorLiving.com)



***One Bedroom***

ASSISTED LIVING

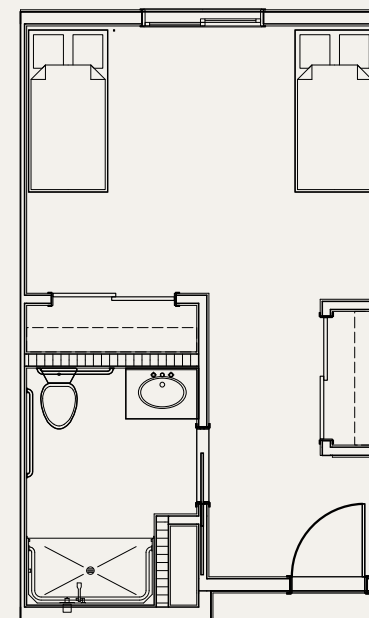
500 Sq. Ft.



***Two Bedroom Deluxe***

ASSISTED LIVING

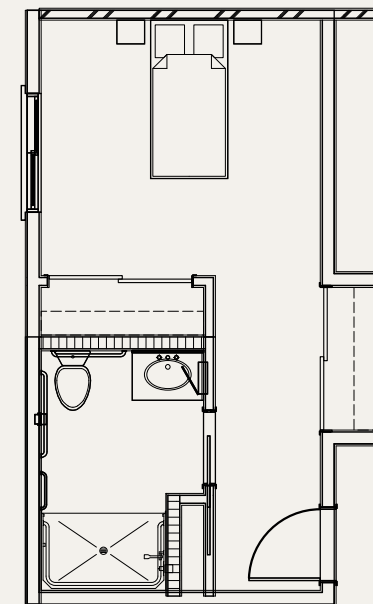
866 Sq. Ft.



***Shared Studio***

MEMORY CARE

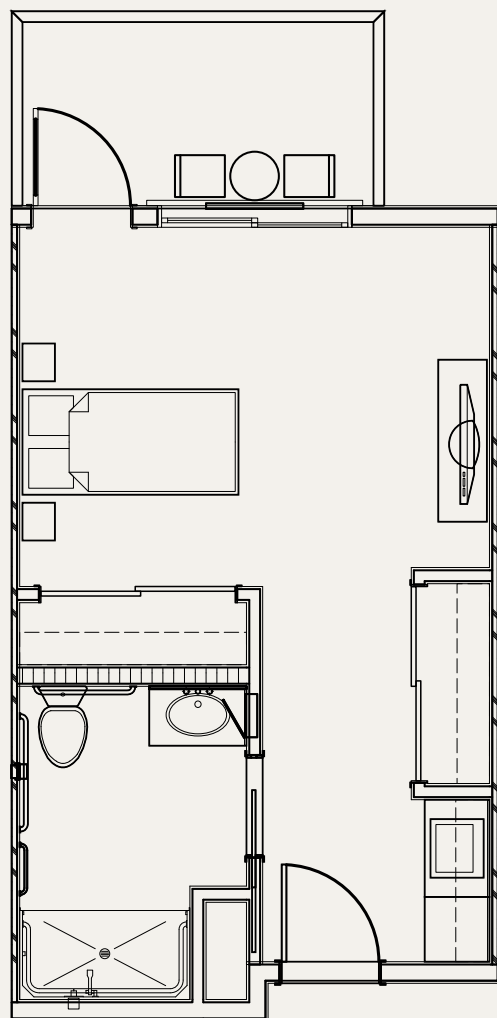
366 Sq. Ft.



***Studio***

MEMORY CARE

333 Sq. Ft.



***Studio***

ASSISTED LIVING

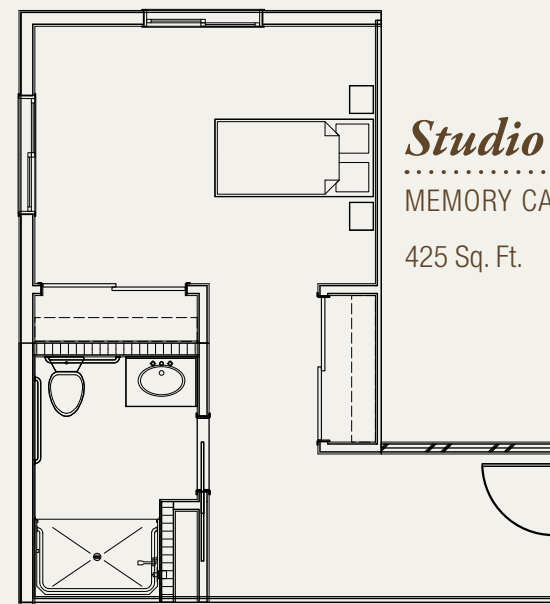
366 Sq. Ft.



***Two Bedroom***

ASSISTED LIVING

830 Sq. Ft.



***Studio (Corner)***

MEMORY CARE

425 Sq. Ft.



**SABAL PALMS**

ASSISTED LIVING & MEMORY CARE

A Protea Senior Living Community

[www.SabalPalmsSeniorLiving.com](http://www.SabalPalmsSeniorLiving.com)